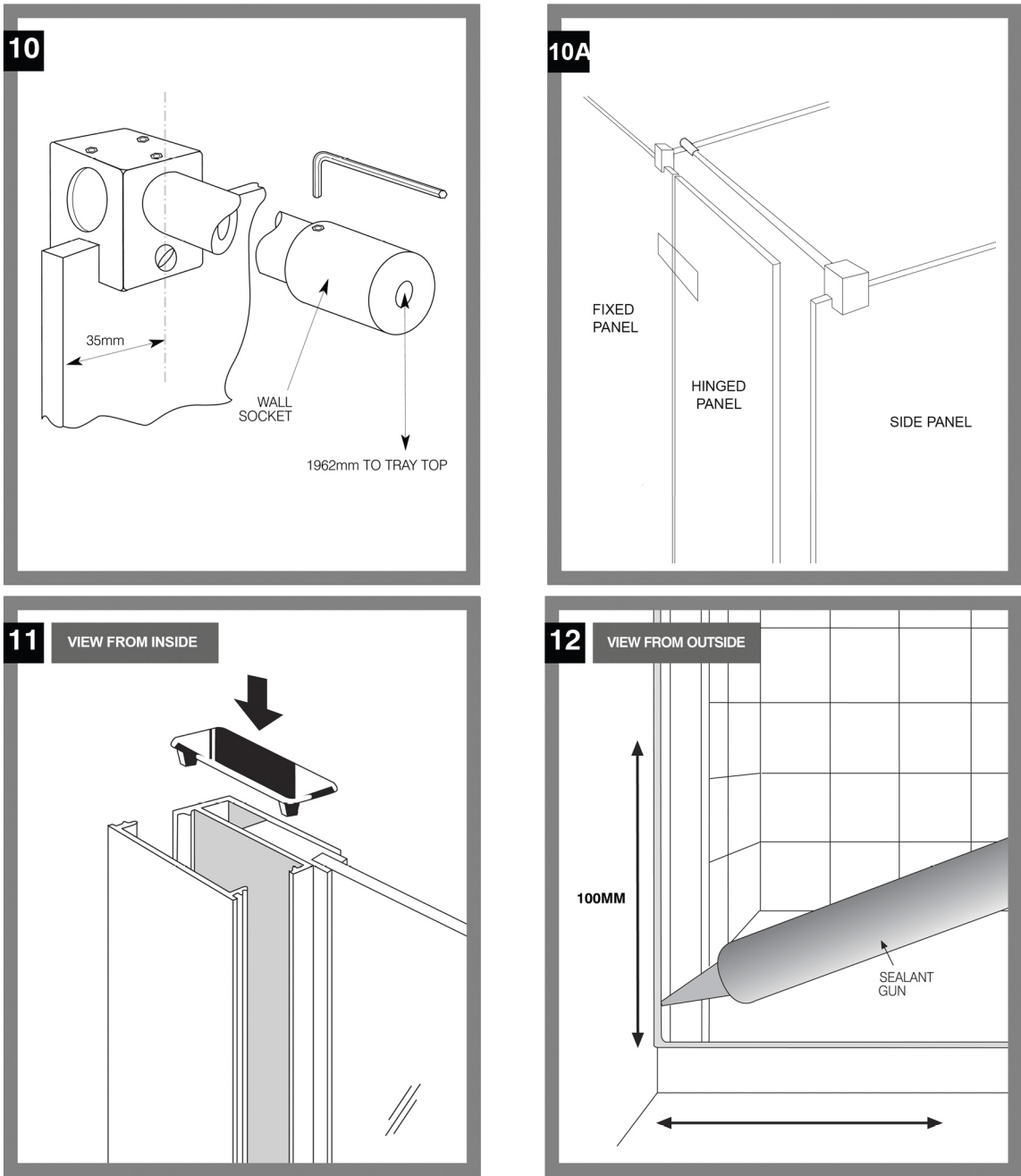


- FOR SP446 ONLY

10. FITTING THE STEADY BAR
- Fit the steady bar to the fixed glass panel. Position chrome block approximately 35mm from the top edge of the fixed screen. Position steady bar wall socket centred at 1962mm up from the tray and in line with the centre hole of the chrome block. Use masking tape to mark the centres, check plumb and drill for wall plug. Remove tape, insert wall plug and screw socket into position. Cut the steady bar to the desired length. Fit the tube into the chrome block and secure into position by tightening the grub screws. Fit the chrome finish cover caps into the block.
- FOR SP447 ONLY

10A.
- One long steady bar and one shorter steady bar is supplied. The longer tube fits from the fixed panel to the back wall, and the shorter tube connects to it via a tee piece to the fixed side panel (please refer to diagram).The tubes may need to be cut down to the correct length.Loosely assemble the steady bar arrangement and offer it up to the enclosure. Ensure the two square steady blocks are located onto the glass approximately 30mm from the outside vertical glass edge, check alignment, and mark the position of the wall socket. Remove the assembled steady bar arrangement and drill and plug hole for wall socket. Replace the assembled steady bar arrangement onto the enclosure and check for alignment again before nipping up all grub screws.
DO NOT OVERTIGHTEN STEADY BLOCK GRUB SCREW ONTO GLASS
11.
- Tighten the wall profile screws and fit the cover strip and top cover cap to the wall profile.
12. SILICONE SEALING
- clean and degrease glass/ tray/ floor before sealing.
- INSIDE: Apply a continuous small bead of silicone sealant to the vertical wall mounting profile to the wall joint. **DO NOT SEAL THE LOWER HORIZONTAL OF THE WALL MOUNTING PROFILE ON THE INSIDE TO ENSURE THAT ANY WATER DRAINS BACK INTO THE TRAY/WET AREA.** Seal the inside of the fixed panel glass to the tray/floor.
- OUTSIDE: Apply a continuous bead of silicone to the lower edge of the fixed panel glass and wall mounting profile. Continue the seal vertically up the wall mounting profile to a height of 100mm. Ensure a good seal is made and there are no pin holes.

DO NOT USE THE SHOWER SCREEN FOR 24 HOURS TO ENSURE SILICONE IS FULLY CURED AND WATERPROOF.



Installation Instructions

Spectra SP446 Fixed Shower Screen with Folding Panel &
Spectra SP447 Fixed Shower Screen with Folding Panel & Side Screen

Issue 2 - April 2016

We recommend the shower tray is fitted correctly and sealed prior to tiling.
Tile down onto the tray and re-seal before installing the shower enclosure.

Spectra 446 Fixed Shower Screen with Folding Panel & Spectra 447 Fixed Shower Screen with Folding Panel & Side Screen

TWO MAN INSTALLATION

Ensure that shower enclosure area is tiled prior to installation.

Equipment Required

Power drill, 6mm masonry drill bit, tape measure, ruler, pencil, masking tape, sanitary grade silicone sealant, rubber mallet, posidrive screwdriver/bits, spirit level and the fitting kit supplied which includes rawlplugs, screws, 'D' rubbers, plastic tube and allen keys.

The components for the screen are packed in 2 boxes comprising:-

a) Corner screen, b) Small panel, c) Fitting kit, d) Installation Instructions, e) Squeegee.

Please open boxes with care and notify your supplier immediately if anything is damaged. Please do not discard packaging. Repack carefully if necessary.

1. GENERAL INSTRUCTIONS

Ensure that the shower area is tiled prior to installing this shower screen. For wet room applications ensure the area is professionally sealed and flat where the screen meets the floor or walls. If fitting onto a shower tray follow manufacturer`s installation instructions. Ensure the tray is level using a spirit level on at least two diagonals. Check the tray has been sealed correctly and sealant is cured before attempting to install the shower screen. We recommend sealing the tray prior to tiling, tiling down onto tray rim and then re-sealing. The floor area around the tray should also be sealed and waterproof.

2. FITTING THE FIXED PANEL TO THE WALL

The adjustable wall mounting profile has concealed fixings. Remove cover strip (B) from wall mounting profile (A)

- Remove captive screws and separate wall mounting profile from shower screen fixed panel.
- Locate the wall mounting profile in the correct position, 10mm in from the edge of the tray, and plumb true with a spirit level. Place three horizontal strips of masking tape onto the tiles in line with the three pre drilled slots in the wall mounting profile, check for vertical again and mark through slots with a pencil. Also mark the tape at side of profile. Drill and plug the wall. Remove masking tape and relocate the wall mounting profile. Using the plastic tube from the fixing kit to hold the stainless steel screws provided, insert a posidrive screwdriver into the tube to locate the head of each screw. Locate the screw into the wall plug through the wall mounting profile and tighten. Re check with spirit level before tightening screws fully.
- Slide the shower screen fixed panel (D) into the wall mounting profile. Re-position screws through the main wall mounting profile into the pre drilled holes in the frame of the screen, and tighten.

6. FITTING THE FOLDING PANEL

Take hinges from fixing kit, undo the allen screws and remove the backing plates. Locate the front part of the hinges onto the outside of the shower screen fixed panel through holes in glass and refit backing plates onto the inside of the fixed glass with the allen screws. Do not fully tighten allen screws at this point.
Important note: The female part of the hinge attaches to the fixed glass of the screen; the male part will attach to the folding panel glass.

- With assistance from a second person, locate the folding panel glass onto the male parts of the hinge. There is a sticker on the glass to indicate the top edge. Re- position the backing plates onto the male part of the hinge and refit the allen screws.
- Check the alignment of the folding glass panel with the fixed glass panel. The top of the two glass panels should be level and the gap between the glass panels should be even at approximately 12mm. Adjust the alignment by slackening off the allen screws in the hinges, moving the glass and then re-tightening the allen screws. Check that the hinges are horizontal with a small spirit level.
- Once the alignment of the panels has been completed, ensure all allen screws are properly tightened. Push on the plastic vertical sealing strip between the two pieces of glass (this fits the full length of the fixed glass). Fit the bottom seal to the lower edge of the folding panel glass; this butts up to the vertical seal. Refit cover strip (B) into wall mounting profile (A).

To fit the side screen for SP447, follow steps 1 to 5 above.

