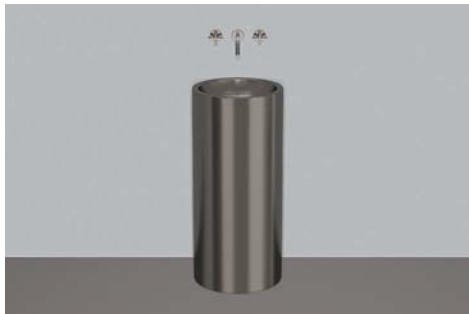


A³form

Technical data sheet



Washstands

WT.RX400K

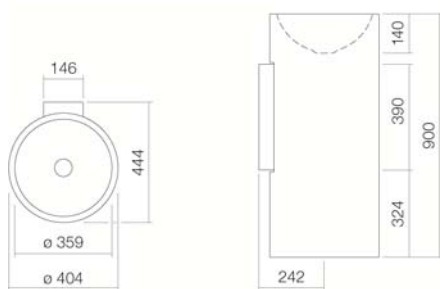
Article number: 4503000190

Design partner: sieger design

Features

Description	WT.RX400K
Article number	4503000190
Standard colour	Metallic / Dark Iron
Special surfaces	
Construction	without tap hole, without overflow
Special versions	
Dimensions	ø 404 x 900 mm
Material	Glazed steel
Net weight	16,5 kg
Installation	for wall connection
Accessoires	Mirror SP.300, Mirror SP.300.1, Mirror SP.325, Mirror SP.325.3, Design mirror SP.FR375.S1
Tap fitting information	Optimum point of impact approx. 152 – 192mm from rear edge of basin.

Tap fittings with a vertical outlet and aerator provide the optimum flow of water onto the surface below (angle of impact: 90°).



Text for invitation to tender

Washstand, round, 404mm ø, glazed inside and outside, dark iron, height 900mm, without tap hole and overflow, including drain valve with glazed cap, Bottle trap, fixing set and matt black wall bracket

Brand: Alape

Model: WT.RX400K
