

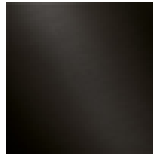
- IMO

Washstand fitting with electronic opening and closing function without pop-up waste - Dark

Article number: 44 515 670-99



- Infrared sensor technology
- 130 mm projection
- height of mixer 135 mm
- height up to aerator 74 mm
- hole diameter 35 mm
- fixed spout
- max. flow 5.7 l/min
- rectangular, air-enriched flow
- suitable for thermal disinfection
- Automatic shut-off after pre-set time is reached
- Direct temperature control at faucet
- Battery-powered (batteries not included)
- 1x CR-P2 battery required
- 2x screw-in M 8 x 1 pressure hose, leak-tested
- lead-free
- Fittings group as per DIN 4109: 1
- Batteries not included



Dark Platinum matt

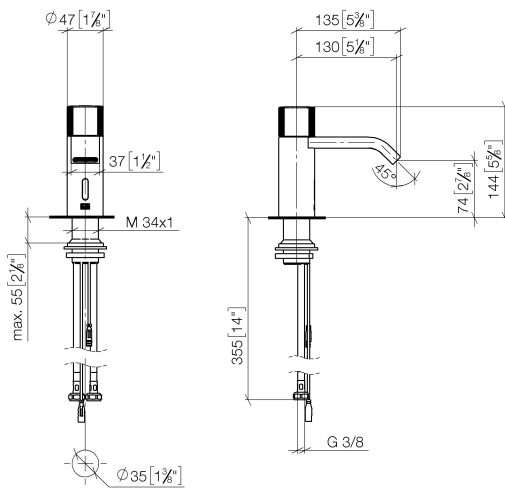
- IMO

Washstand fitting with electronic opening and closing function without pop-up waste - Dark

Article number: 44 515 670-99

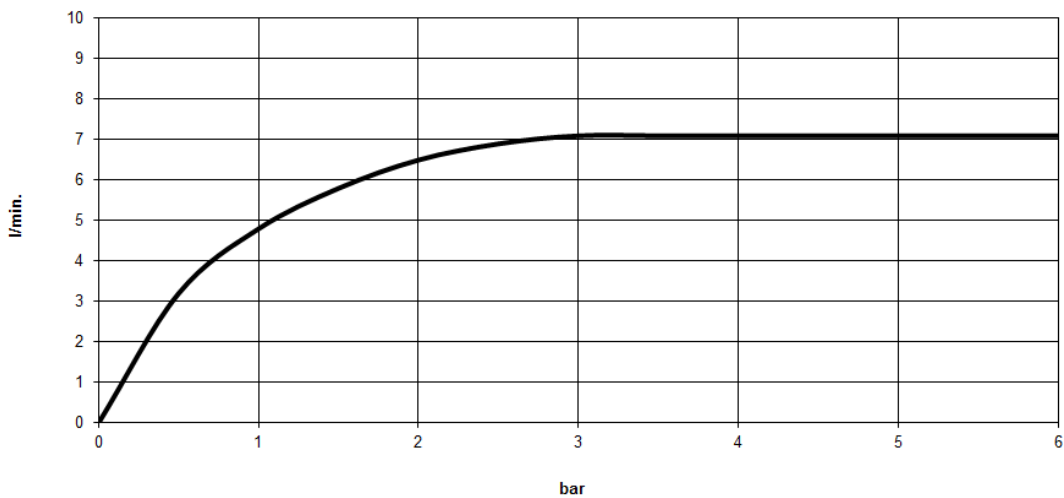
### Dimensional drawing

mm [inches]



All details in mm / inch = mm x 0.0394

### Flow rate chart

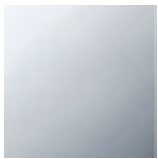


- IMO

Washstand fitting with electronic opening and closing function without pop-up waste - Dark

Article number: 44 515 670-99

Other finish variants



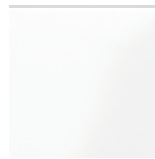
polished chrome  
44 515 670-00



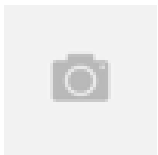
platinum matt  
44 515 670-06



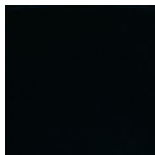
platinum  
44 515 670-08



matt white  
44 515 670-10



Brushed durabronz (23kt)  
44 515 670-28



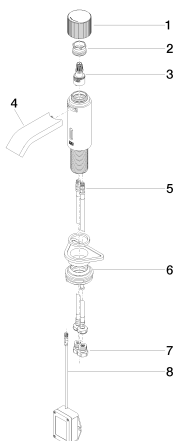
matt black  
44 515 670-33



chrome matt  
44 515 670-93

Other finishes on request (x-tra Service)

Spare parts list



No.	Item Number	Name	Quantity used
1	90 20 66 122 00-99	handle	1
2	09 24 04 565 90	nut	1
3	90 90 03 173 00 90	top	1
4	90 28 22 239 00-99	spout	1
5	04 30 04 100 00 90	hose	2
6	04 23 10 044 08 90	fixing set	1
7	90 24 03 314 00 90	nipple set	2
8	90 10 01 250 00 90	casingwithout battery	1