



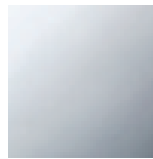
Bath - Tara.

Concealed two-way diverter - polished chrome

Article number: 36 200 882-00

Date of manufacture from 4/1/2022

- rotary diverter
- rosette 60 mm

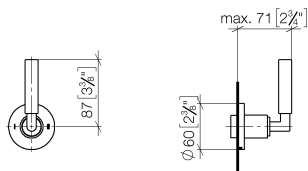


polished chrome

Miscellaneous items are required for this article.

Dimensional drawing

mm [inches]



All details in mm / inch = mm x 0.0394



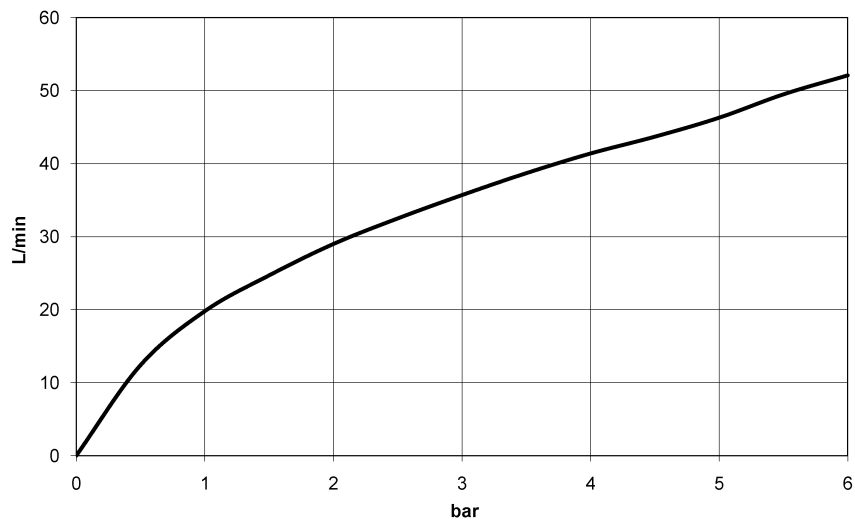
Bath - Tara.

Concealed two-way diverter - polished chrome

Article number: 36 200 882-00

Date of manufacture from 4/1/2022

Flow rate chart



Bath - Tara.

Concealed two-way diverter - polished chrome

Article number: 36 200 882-00

Date of manufacture from 4/1/2022

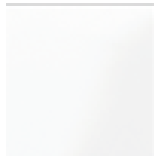
Other finish variants



platinum matt
36 200 882-06



platinum
36 200 882-08



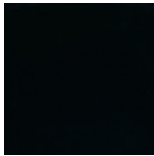
matt white
36 200 882-10



Dark Chrome
36 200 882-19



Brushed durabrass (23kt)
36 200 882-28



matt black
36 200 882-33



Brushed Champagne (22kt)
36 200 882-46



Champagne (22kt)
36 200 882-47



chrome matt
36 200 882-93



Dark Platinum matt
36 200 882-99

Other finishes on request (x-tra Service)

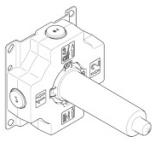


Bath - Tara.

Concealed two-way diverter - polished chrome

Article number: 36 200 882-00

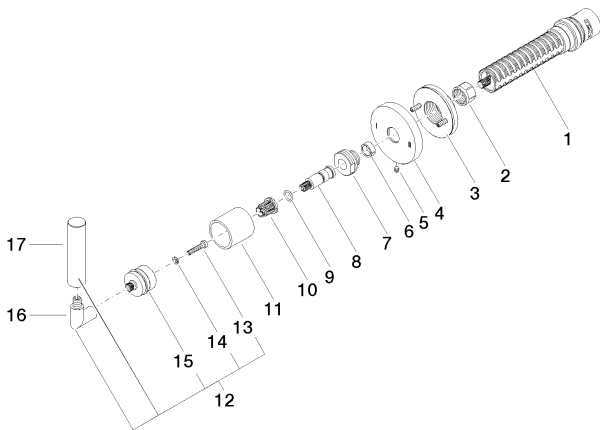
Date of manufacture from 4/1/2022



35 202 970 90

Concealed two-way diverter -

Spare parts list



No.	Item Number	Name	Quantity used
1	90 90 03 304 10 90	diverter	1
2	09 23 30 023 90	nut	1
3	90 21 02 181 00 90	disc	1
4	09 27 89 118-00	rosette	1
5	09 31 11 294 90	pin	1
6	09 14 15 020 90	ring	1
7	09 24 05 002 90	nipple	1
8	09 29 06 022 90	spindle	1
9	09 14 10 060 90	seal	1
10	90 12 12 002 00 90	fixing cap	1
11	09 21 02 144-00	sleeve	1
12	04 20 88 052 10-00	handle	1
13	09 30 30 075 90	screw	1
14	09 30 11 029 90	disc	1
15	90 12 12 219 00-00	base	1
16	04 18 20 022 00-00	angle	1
17	09 20 88 052-00	handle	1