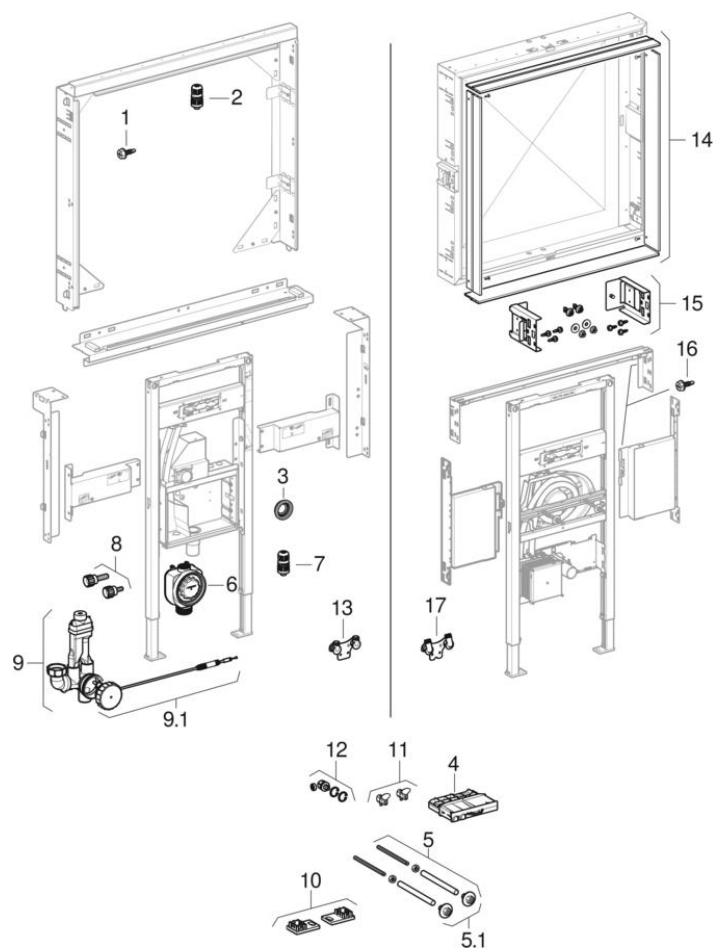


Geberit Duofix elements for Geberit ONE

2019 -



Brand Geberit

Characteristics

Year of manufacture from | 2019

Valid for articles

111.069.00.1	111.941.00.1	111.945.00.1	111.041.00.1
111.042.00.1	111.043.00.1	111.044.00.1	111.045.00.1
111.046.00.1	111.942.00.1	111.943.00.1	111.944.00.1
111.951.00.1	111.952.00.1	111.953.00.1	111.954.00.1
111.955.00.1	111.071.00.1	111.072.00.1	111.073.00.1
111.074.00.1	111.081.00.1	111.082.00.1	111.083.00.1
111.084.00.1	111.091.00.1	111.092.00.1	111.093.00.1
111.094.00.1	111.051.00.1	111.052.00.1	111.053.00.1
111.054.00.1			

#	Art. no.	Description	Remarks
1 / 16	111.892.00.1	Geberit Duofix hexagon head setscrew with crosshead, self-cutting	Multipack
2 / 7	244.129.00.1	Geberit female socket for mains connection: Plug type=4-pole	
5	241.059.00.1	Geberit set of threaded rods M10 (2 pc.)	
5.1	241.009.00.1	Geberit set of flange nuts (2 pc.)	
10	244.125.00.1	Geberit Duofix set of foot plates (2 pc.)	
11	243.674.00.1	Geberit set of locking bolts for concealed function box, for washbasin taps (2 pc.)	