

BATHROOM FURNITURE COLLARO

PRODUCT INFORMATION

1 . POSITION



Article number	C029B0DH
Article title	Villeroy & Boch Collaro Vanity unit, with lighting, 4 pull-out compartments, 1600 x 548 x 500 mm, Glossy White / Glossy White
Product designation	Vanity unit
Collection	Collaro
PROJECTS	DESIGN
Assembly / Assembly type	wall-mounted
Type of opening	4 pull-out compartments
Equipment	2 x wide glass drawer divider , 4 x narrow glass drawer divider 2 x accessory box L 4 x pull-out compartment with non-slip mat
Scope of delivery	1 x vanity unit , 1 x fastening set
Position of washbasin	washbasin on left
Ordering information	Please order specified washbasin separately. It is not always possible to cancel or alter orders!
Depth in mm	500
Width in mm	1600
Height in mm	548
Weight in kg	71,00
express delivery	No
Suitable for	selected vanity washbasins
Function	<ul style="list-style-type: none"> • with SoftClosing • with lighting
Material front	MDF
Surface of front	Acrylic film
Material body	MDF
Surface of body	Acrylic film
Material cover panel	MDF
Other material	Handle: aluminium
Other surfaces	Handle: Paint, matt
Operating mode	Mains-operated
Energy detection	, This light contains built-in LEDs. The LEDs in the light cannot be replaced.
Lighting	1x LED
Power of lamp	1 x LED / 12 W



PROJECTS

Light colour (designation & colour temperature)	2700 K (neutral white) to (daylight white)
Lighting control	with sensor dimmer
Type of handles	integrated
EAN number	4065467187509
General information	

- After retrofitting with ZigBee Home Automation (C585 00 for illuminated vanity units and illuminated mirror) can be controlled via Smart Home environment. The products can be switched on and off with a sensor switch.
- The products can be connected via the Home Automation with all hubs/gateways using this transmission standard, such as Hue Bridge or similar Amazon Echo modules.

COLOURS

COLOUR DESIGNATION



Glossy White

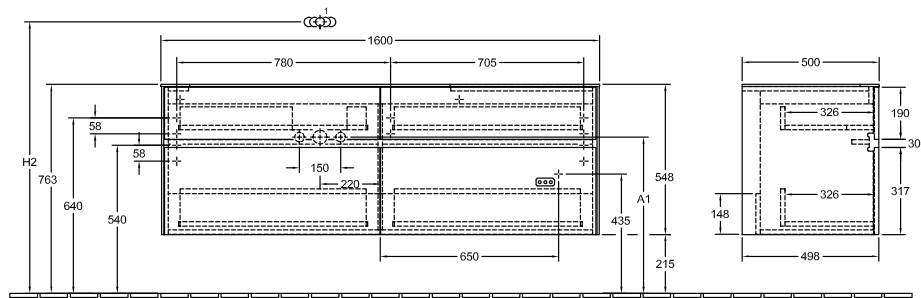
COLOUR DESIGNATION OF COVER PANEL

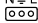


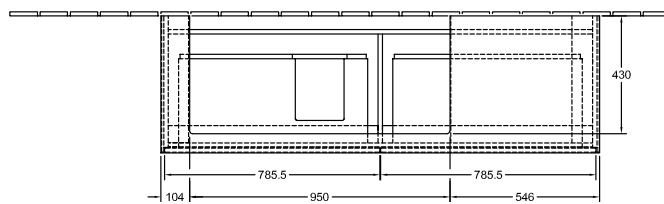
Glossy White


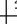
TECHNICAL DRAWINGS

C029B0DH



$\frac{N}{L}$ 220 - 240V




			H2	A1
4A33 1G		X		570
4188 1B/1H		X		605
4188 L1		X		605
4A22 1G/1H		X		645
4A22 1K		X		645
4A22 1F	X		1050	645