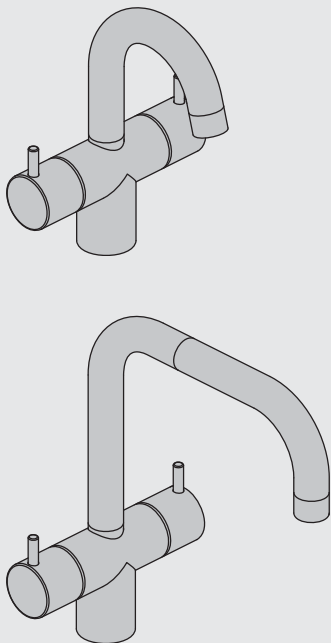


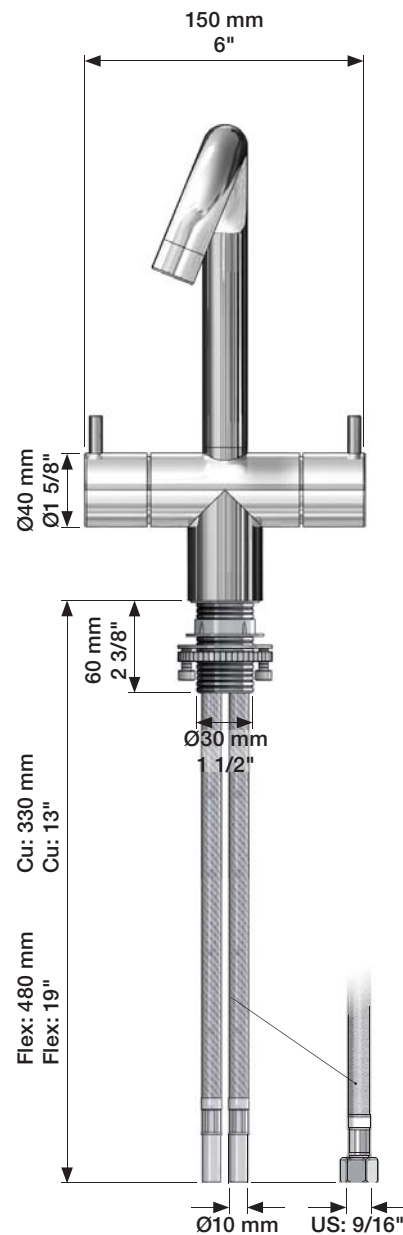
VOLA HV6, HV7
VOLA KV6, KV7

Fitting instruction
Montageanleitung
Monteringsvejledning
Monteringsvægledning
Montage hanleiding
Manuel de montage



VA 1.42/19825, VA 1.42/19826

KV6, KV7:



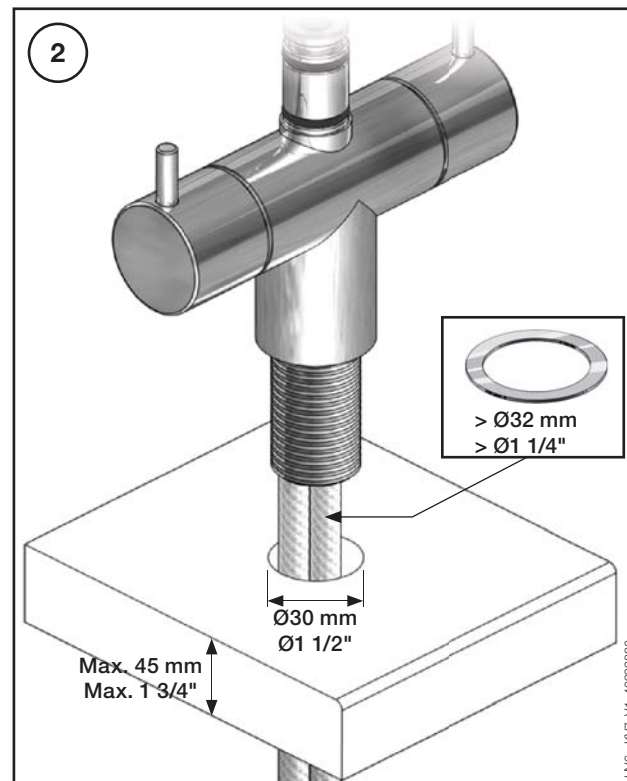
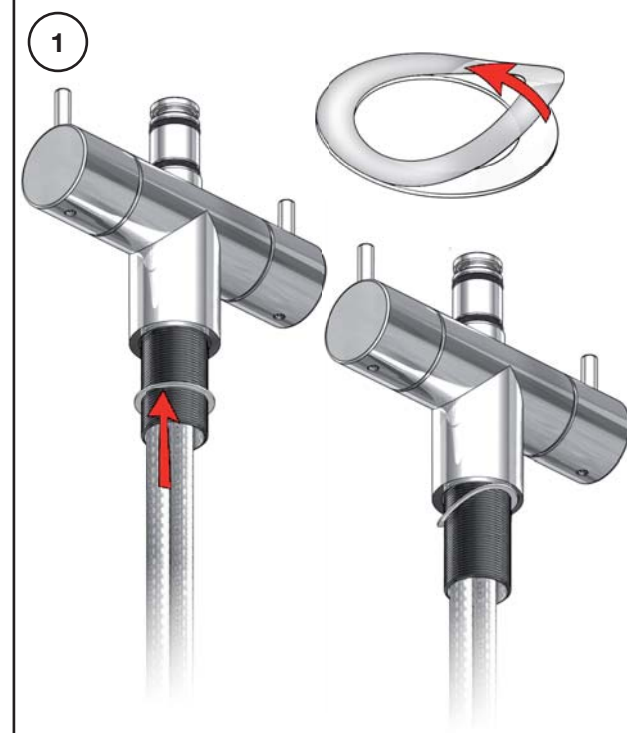
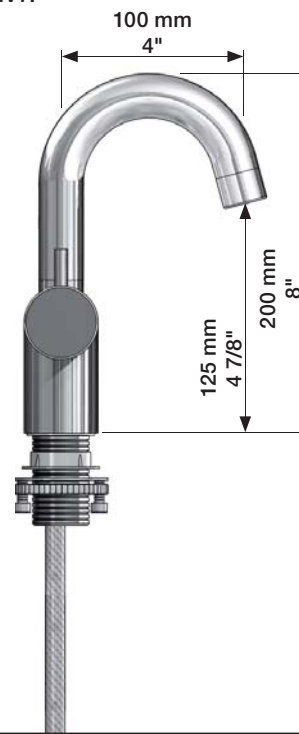
Data, 3 Bar (Min. 0,5 - Max. 8 Bar):

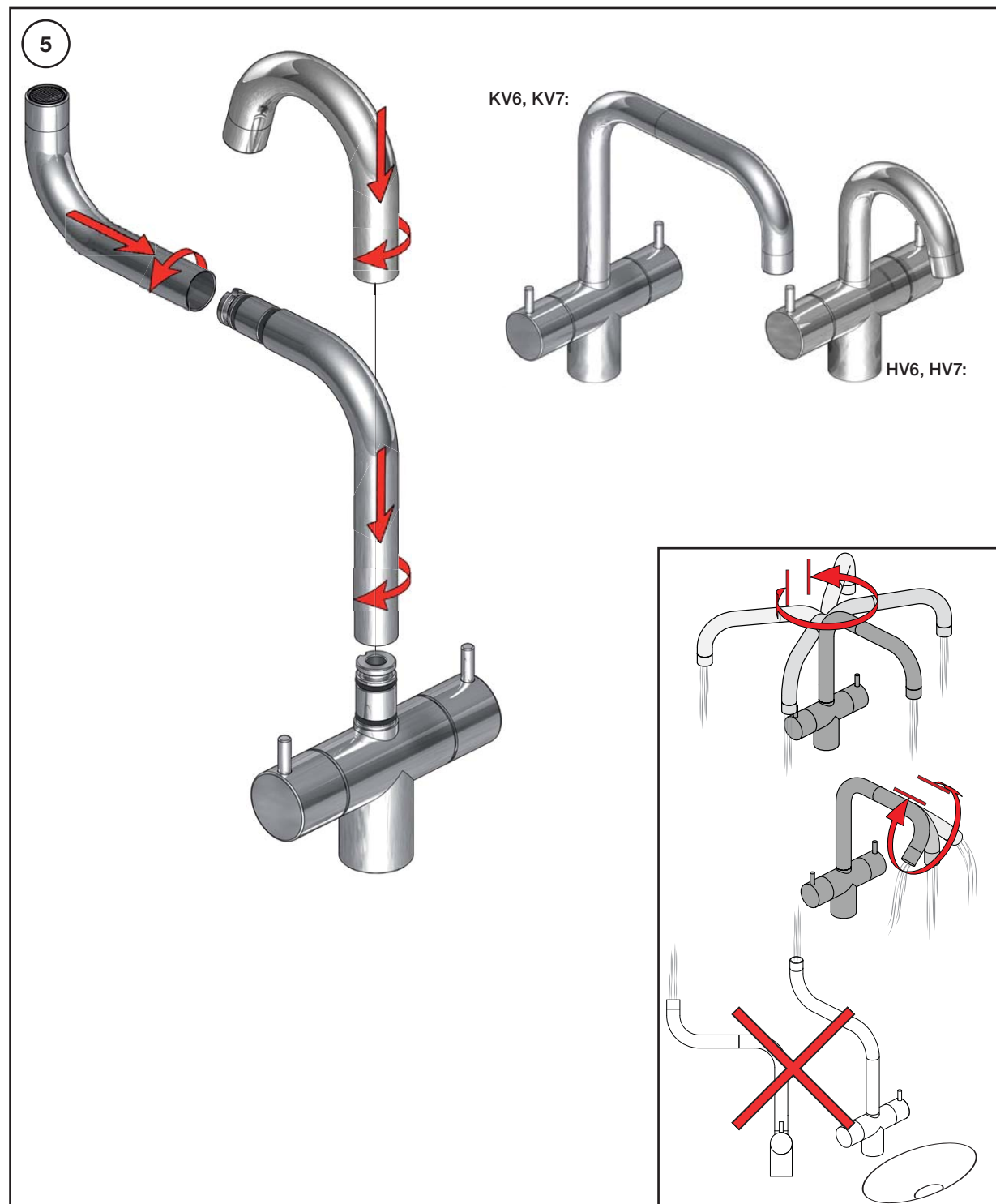
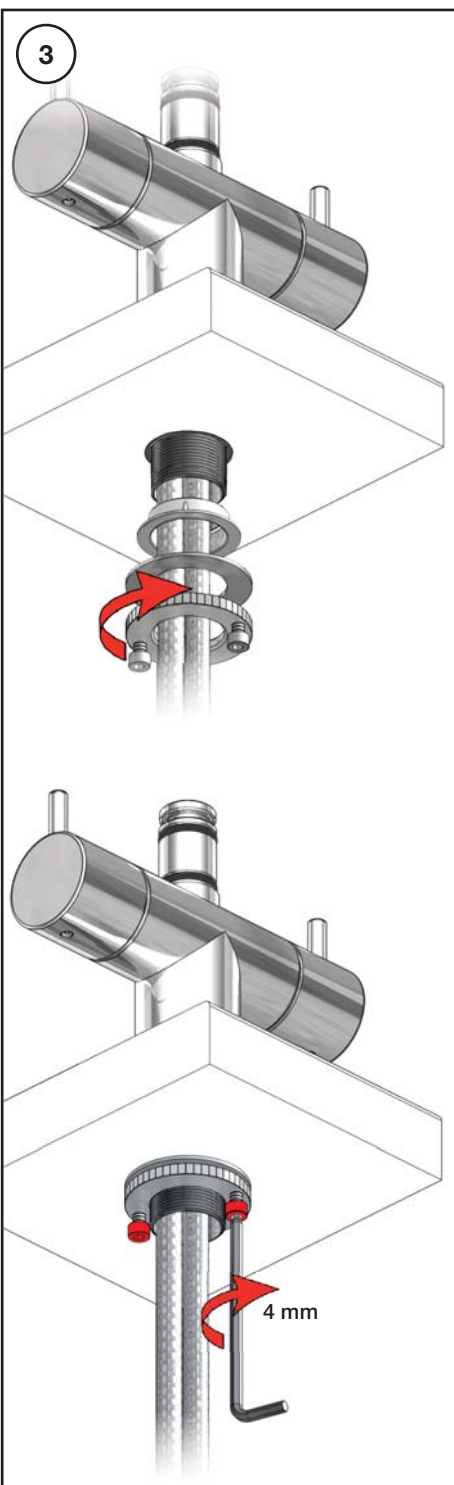
Max.	l/min.	Gal/min.
HV6/7:	9,0	2,0
KV6/7	9,0	2,0

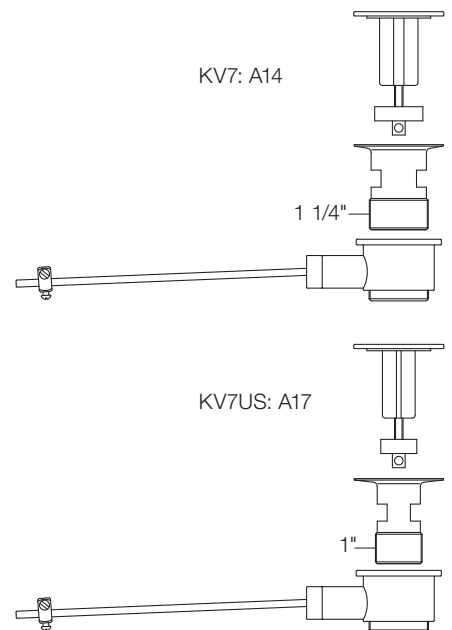
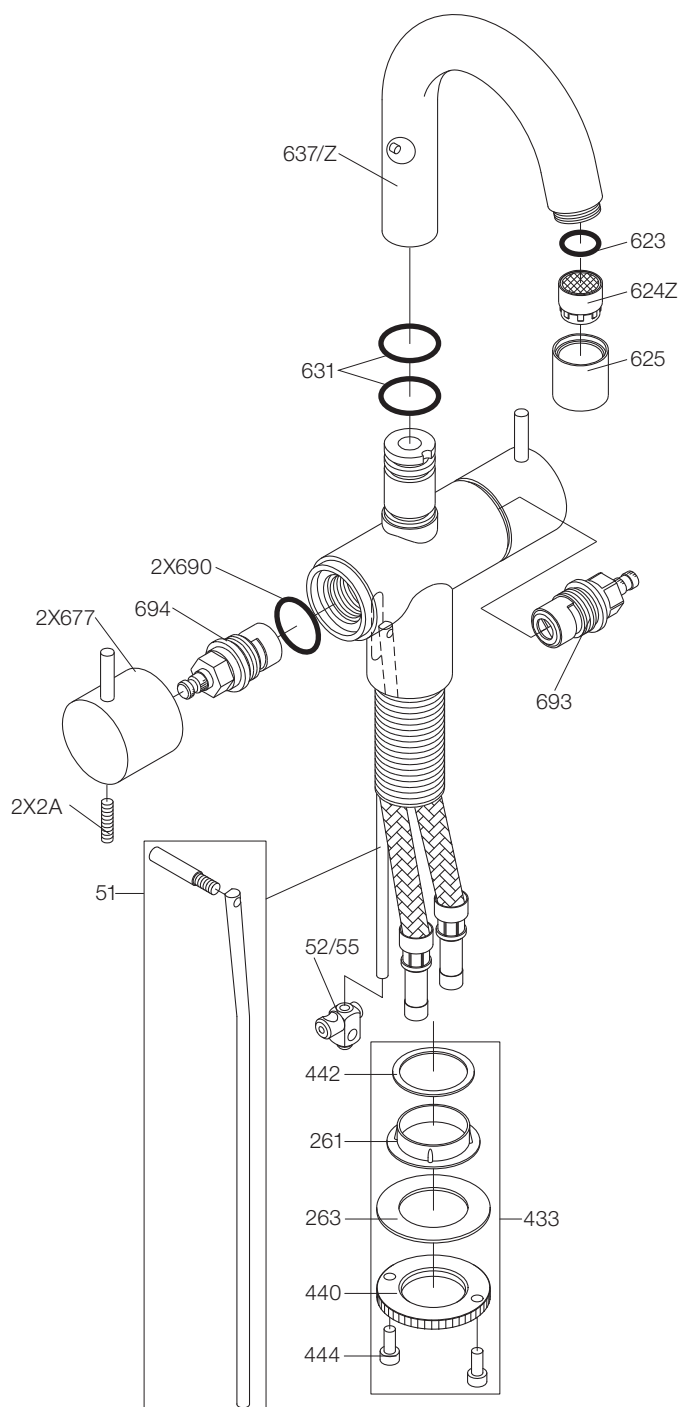
Max. 70°C, 158°F



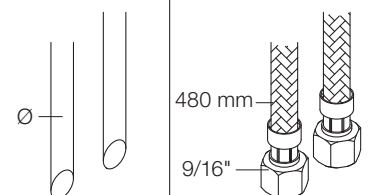
HV6, HV7:



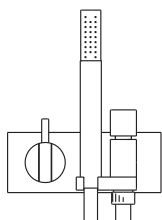




KV7: Ø10
KV7JP: Ø10
KV7US: Ø3/8"
KV7Q: Ø3/8"



010Z: VR623, VR624Z
VR433: VR261, VR263, VR440, VR442, 2xVR444
VR693K: VR23, VR693
VR694K: VR23, VR694
NR.7: VR2A, VR677



VOLA A/S
Lunavej 2
DK-8700 Horsens
Tlf : + 45 7023 5500
Fax: + 45 7023 5511
sales@vola.com
www.vola.com

VOLA HV7

VOLA FHV7
VOLA HV7Q
VOLA FHV7US
VOLA HV7US

Dato

Sep. 09

Rev.

6

Blad

SB 46