

Date:

Client:

Project:

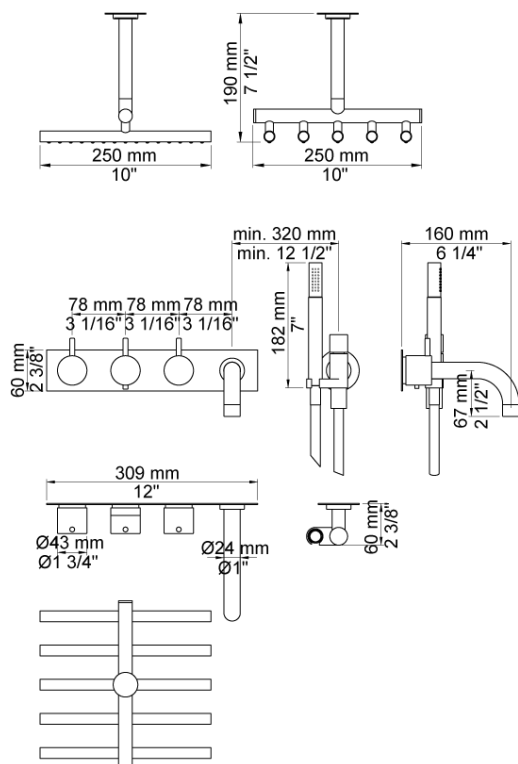
VOLA product: COMBI-6

**COMBI-6**

¾" Thermostatic mixer with 3-way diverter. Combi-6UP = Thermostatic mixer 5400NVA3, 2 pcs. 200M.Combi-6AP = Handle NR51, handle NR52, handle NR64G, 160 mm fixed spout 010C, hand shower and hand shower holder with non-return valve 070, hose 1500 mm, ceilingmounted head shower 050A, 2 pcs. 60 mm circular flange 001, four-hole plate 60 x 309 mm 5004B.

Flow

	Bar:	1.0	2.0	3.0	4.0	5.0
050A ¹⁾	(l/min)	13.3	18.8	23.0	26.6	29.7
010C ²⁾	(l/min)	11.6	16.3	20.0	23.1	25.8
070 ³⁾	(l/min)	5.2	7.4	9.0	9.0	9.0

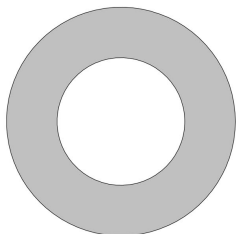
¹⁾ Outlet 1²⁾ Outlet 2³⁾ Outlet 3**Available in colors**

Color 02, Grey
 Color 04, Light blue
 Color 05, Orange
 Color 06, Light green
 Color 08, Yellow
 Color 09, Dark grey
 Color 12, Mocca
 Color 14, Bright red
 Color 15, Dark blue
 Color 16, Polished chrome
 Color 17, Gloss black
 Color 18, White
 Color 19, Natural brass
 Color 20, Brushed chrome
 Color 21, Carmine red
 Color 25, Pink
 Color 27, Matt black
 Color 40, Brushed stainless steel

Date:

Client:

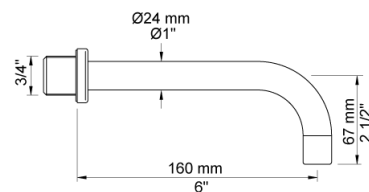
Project:

**001**

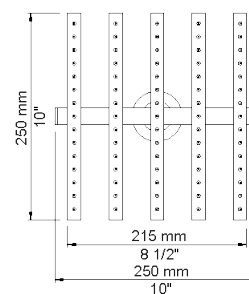
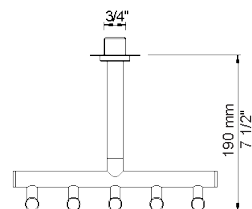
60 mm circular flange. Hole Ø33 mm.

**010C**

160 mm fixed spout for high flow.

**050A**

Head shower, ceiling mounted. 60 mm cover flange included.



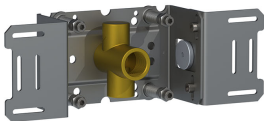
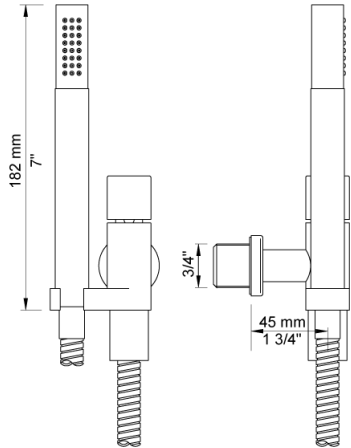
Date:

Client:

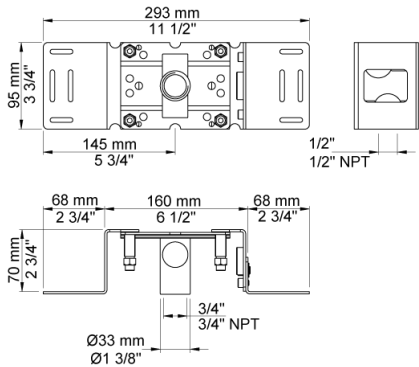
Project:



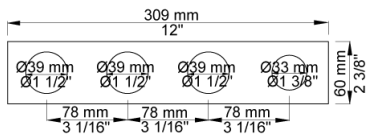
070
Hand shower, hand shower holder and hose with non-return valve.



200M
Separate outlet socket. 1/2" connection to copper, steel, iron or pex pipe work.



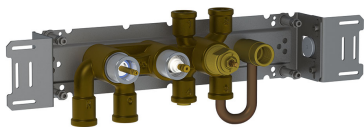
5004B
Four-hole plate (for 5400, 5400N and 5400NV). 60 x 309 mm. Holes Ø39, Ø39, Ø39 and Ø33 mm.



Date:

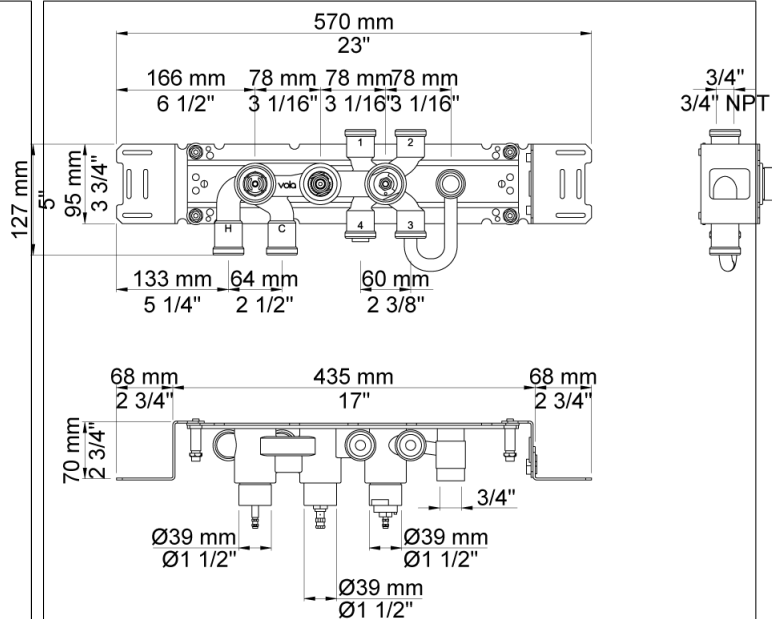
Client:

Project:



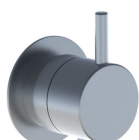
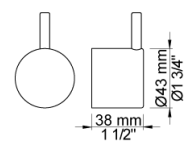
5400NVA3

Thermostatic mixer with 3-way diverter, one fixed outlet socket. 3/4" connection to copper, steel, iron or pex pipe work.



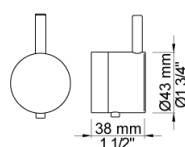
NR51

On/off handle for 5000 and 6000.



NR52

Thermostatic handle for serie 5000.



Date:

Client:

Project:

**NR64G**

Diverter handle for 5400/5600. With peg in the same colour as handle (Standard).

