

Date:

Client:

Project:

VOLA product: 621C



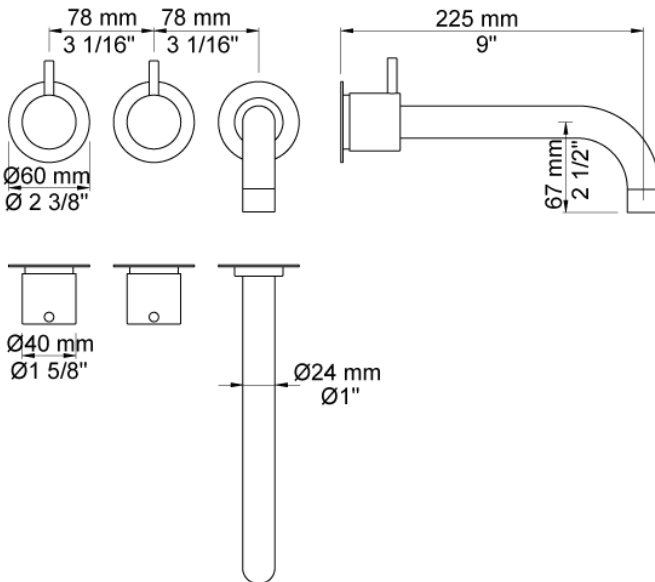
621C

Two-handle build-in mixer with ¼ turn ceramic disc technology. 621CUP = Build-in mixer 600. 621CAP = 2 pcs. handles NR17, 225 mm fixed spout 020C, 3 pcs. 60 mm circular flanges 001.

Flow

	Bar:	1.0	2.0	3.0	4.0	5.0
621C	(l/min)	17.3	24.5	30.0	30.0	30.0
621C ¹⁾	(l/min)	28.9	40.8	50.0	57.7	64.6

¹⁾ 020C with VR624E



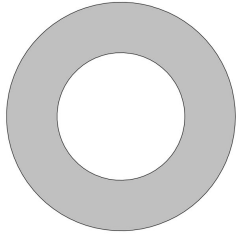
Available in colors

- Color 02, Grey
- Color 04, Light blue
- Color 05, Orange
- Color 06, Light green
- Color 08, Yellow
- Color 09, Dark grey
- Color 12, Mocca
- Color 14, Bright red
- Color 15, Dark blue
- Color 16, Polished chrome
- Color 17, Gloss black
- Color 18, White
- Color 19, Natural brass
- Color 20, Brushed chrome
- Color 21, Carmine red
- Color 25, Pink
- Color 27, Matt black
- Color 40, Brushed stainless steel

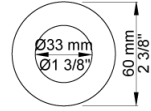
Date:

Client:

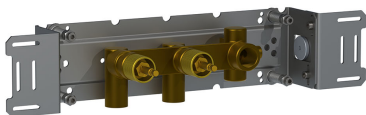
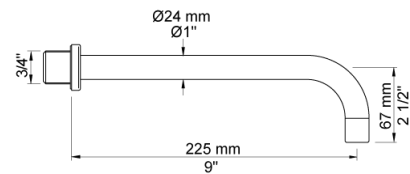
Project:



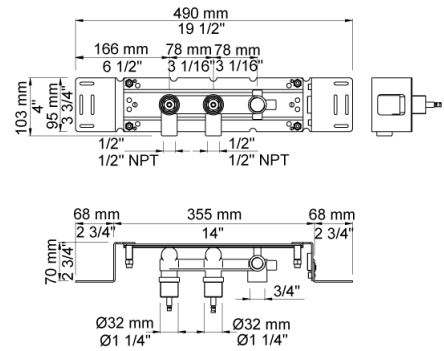
001
60 mm circular flange. Hole Ø33 mm.



020C
225 mm fixed spout for high flow.



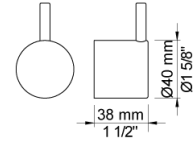
600
Two-handle build-in mixer, with fixed outlet socket. 1/2" connection to copper, steel, iron or pex pipe work.



Date:

Client:

Project:



NR17

Operating handle for 600, 700, 800, 900, 1500, 2800, 2900, S20, S21, S40, S42 incl. variants. Ø40 mm.