

Date:

Client:

Project:

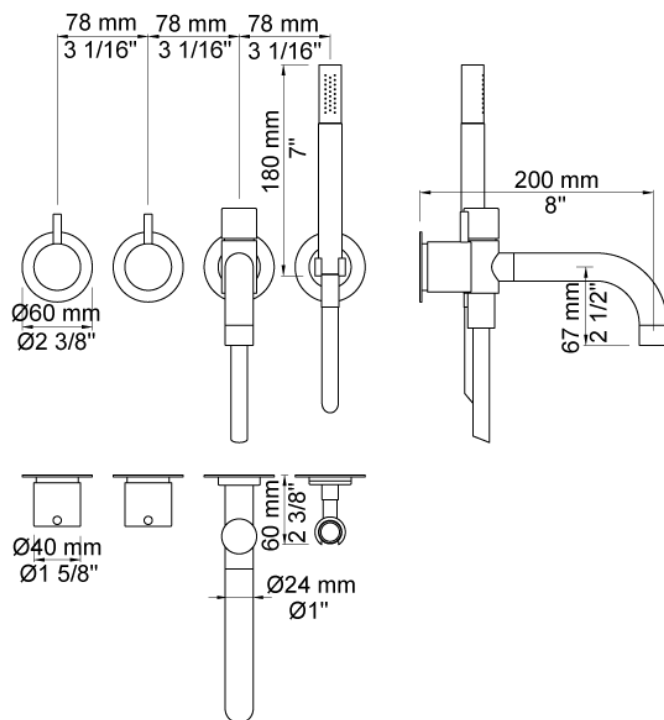
VOLA product: 641DT8

**641DT8**

Two-handle build-in mixer with ¼ turn ceramic disc technology. 641DT8UP = Build-in mixer 600. 641DT8AP = 2 pcs. handle NR17, 200 mm bath spout with diverter for hand shower 040D, 4 pcs. 60 mm circular flanges 001, hand shower holder T8.

Flow

	Bar:	1.0	2.0	3.0	4.0	5.0
040D	(l/min)	12.7	18.0	22.0	25.4	28.4
T2	(l/min)	6.4	9.0	11.0	12.7	14.2

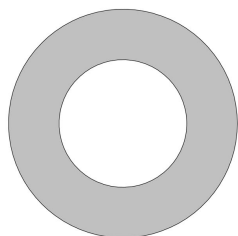
**Available in colors**

Color 02, Grey
 Color 04, Light blue
 Color 05, Orange
 Color 06, Light green
 Color 08, Yellow
 Color 09, Dark grey
 Color 12, Mocca
 Color 14, Bright red
 Color 15, Dark blue
 Color 16, Polished chrome
 Color 17, Gloss black
 Color 18, White
 Color 19, Natural brass
 Color 20, Brushed chrome
 Color 21, Carmine red
 Color 25, Pink
 Color 27, Matt black

Date: _____

Client: _____

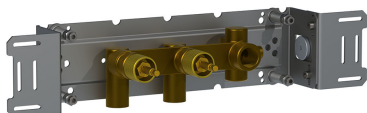
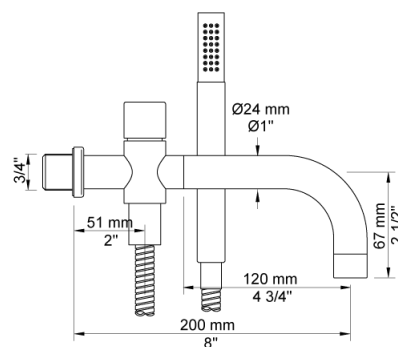
Project: _____



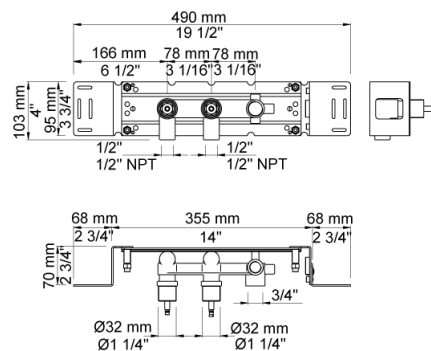
001
60 mm circular flange. Hole Ø33 mm.



040D
200 mm bath spout with diverter for handshower. Dimension Ø24 mm.
Incl. hand shower T2.



600
Two-handle build-in mixer, with fixed outlet socket. ½" connection to copper, steel, iron or pex pipe work.



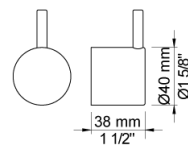
Date:

Client:

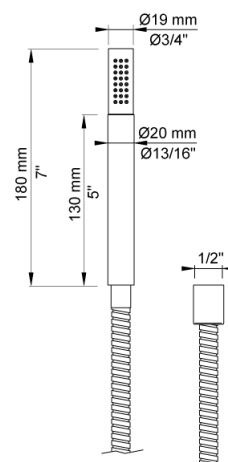
Project:

**NR17**

Operating handle for 600, 700, 800, 900, 1500, 2800, 2900, S20, S21, S40, S42 incl. variants. Ø40 mm.

**T2**

Hand shower with 1.5 m hose.

**T8**

Hand shower holder for low mounting.

