

Date:

Client:

Project:

VOLA product: 611C

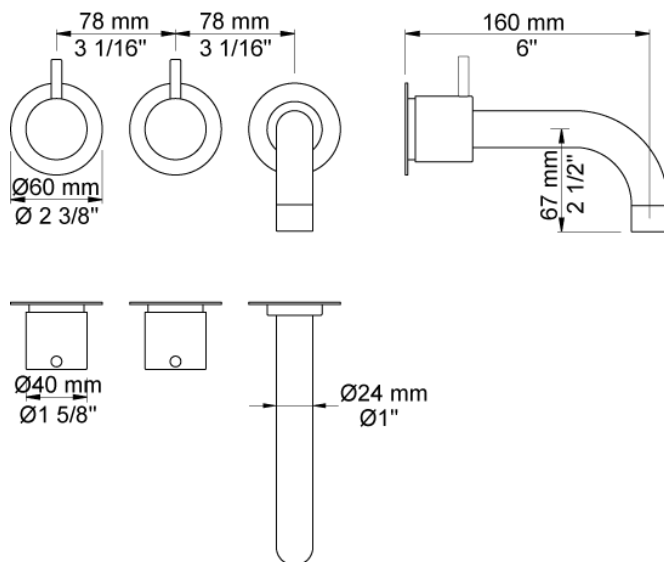
**611C**

Two-handle build-in mixer with ¼ turn ceramic disc technology. 611CUP = Build-in mixer 600. 611CAP = 2 pcs. handle NR17, 160 mm fixed spout 010C, 3 pcs. 60 mm circular flanges 001.

**Flow**

	Bar:	1.0	2.0	3.0	4.0	5.0
611C	(l/min)	17.3	24.5	30.0	30.0	30.0
611C <sup>1)</sup>	(l/min)	28.9	40.8	50.0	57.7	64.6

<sup>1)</sup> 010C with VR624E

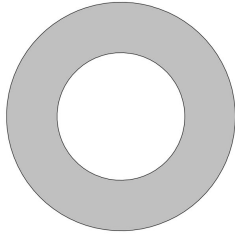
**Available in colors**

Color 02, Grey  
 Color 04, Light blue  
 Color 05, Orange  
 Color 06, Light green  
 Color 08, Yellow  
 Color 09, Dark grey  
 Color 12, Mocca  
 Color 14, Bright red  
 Color 15, Dark blue  
 Color 16, Polished chrome  
 Color 17, Gloss black  
 Color 18, White  
 Color 19, Natural brass  
 Color 20, Brushed chrome  
 Color 21, Carmine red  
 Color 25, Pink  
 Color 27, Matt black  
 Color 40, Brushed stainless steel

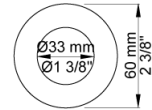
Date:

Client:

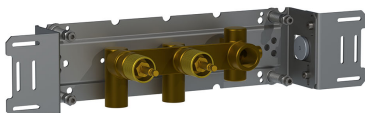
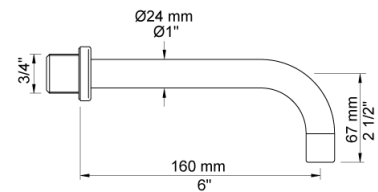
Project:

**001**

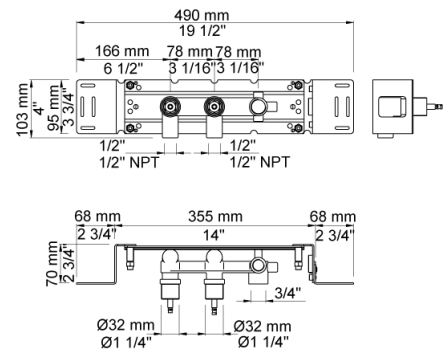
60 mm circular flange. Hole Ø33 mm.

**010C**

160 mm fixed spout for high flow.

**600**

Two-handle build-in mixer, with fixed outlet socket. 1/2" connection to copper, steel, iron or pex pipe work.



Date:

Client:

Project:

**NR17**

Operating handle for 600, 700, 800, 900, 1500, 2800, 2900, S20, S21, S40, S42 incl. variants. Ø40 mm.

