

Date:

Client:

Project:

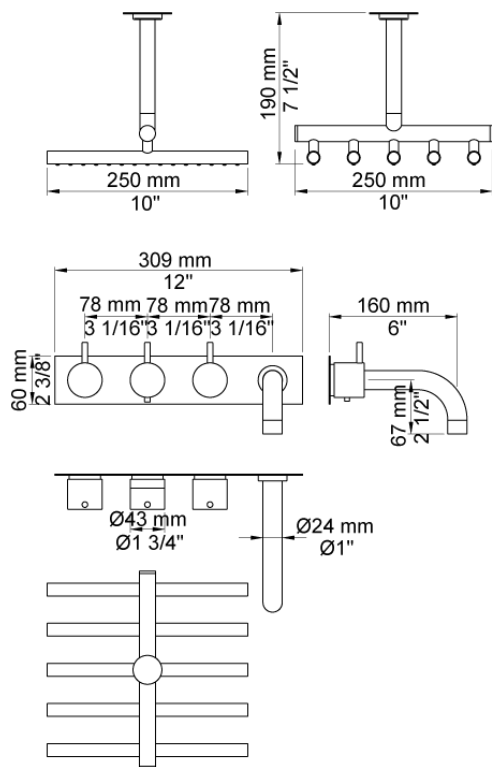
VOLA product: 5414C-051A

**5414C-051A**

¾" thermostatic mixer. 5414C-051AUP = Thermostatic mixer 5400N. 5414C-051AAP = Handle NR51, handle NR52, handle NR64G, 160 mm fixed spout 010C, ceiling mounted head shower 050A, 60 mm circular flange 001, four-hole plate 60 x 309 mm 5004B.

**Flow**

	Bar:	1.0	2.0	3.0	4.0	5.0
010C	(l/min)	15.0	21.2	26.0	30.0	30.0
050A	(l/min)	13.3	18.8	23.0	26.6	29.7

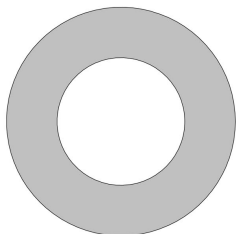
**Available in colors**

Color 02, Grey  
 Color 04, Light blue  
 Color 05, Orange  
 Color 06, Light green  
 Color 08, Yellow  
 Color 09, Dark grey  
 Color 12, Mocca  
 Color 14, Bright red  
 Color 15, Dark blue  
 Color 16, Polished chrome  
 Color 17, Gloss black  
 Color 18, White  
 Color 19, Natural brass  
 Color 20, Brushed chrome  
 Color 21, Carmine red  
 Color 25, Pink  
 Color 27, Matt black  
 Color 40, Brushed stainless steel

Date:

Client:

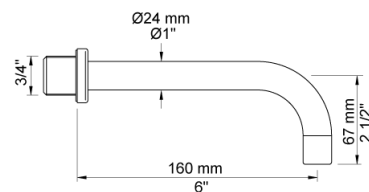
Project:

**001**

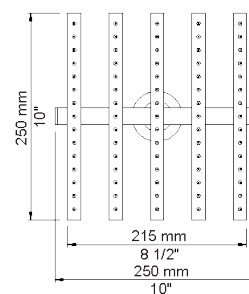
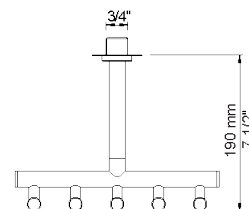
60 mm circular flange. Hole Ø33 mm.

**010C**

160 mm fixed spout for high flow.

**050A**

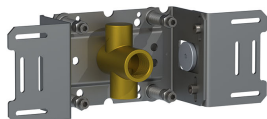
Head shower, ceiling mounted. 60 mm cover flange included.



Date:

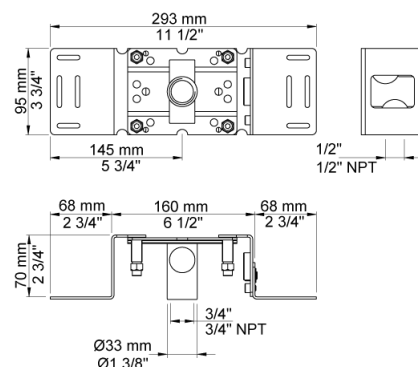
Client:

Project:



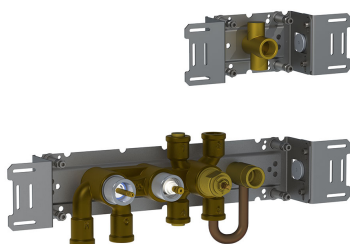
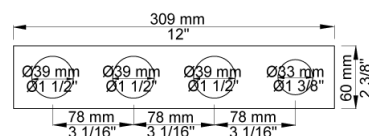
### 200M

Separate outlet socket. 1/2" connection to copper, steel, iron or pex pipe work.



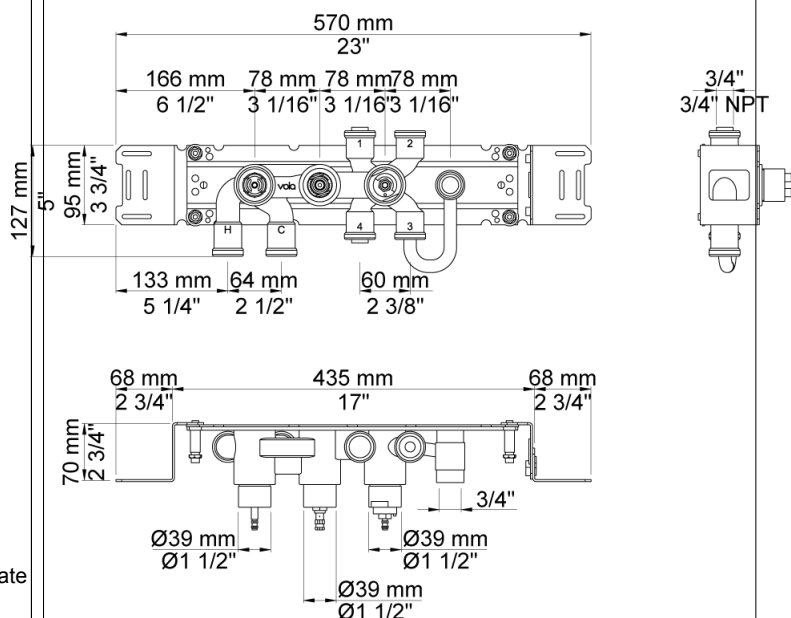
### 5004B

Four-hole plate (for 5400, 5400N and 5400NV). 60 x 309 mm. Holes Ø39, Ø39, Ø39 and Ø33 mm.



### 5400N

Thermostatic mixer with diverter and fixed outlet socket and one separate outlet socket, 200M. 3/4" connection to copper, steel, iron or pex pipe work.



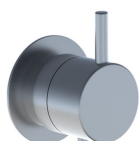
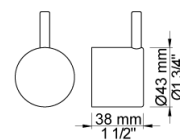
Date:

Client:

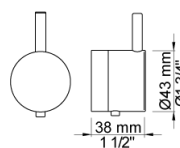
Project:

**NR51**

On/off handle for 5000 and 6000.

**NR52**

Thermostatic handle for serie 5000.

**NR64G**

Diverter handle for 5400/5600. With peg in the same colour as handle (Standard).

