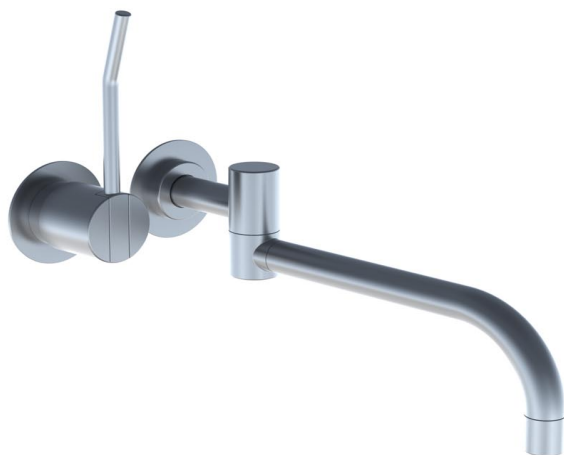


Date:

Client:

Project:

VOLTA product: 131L

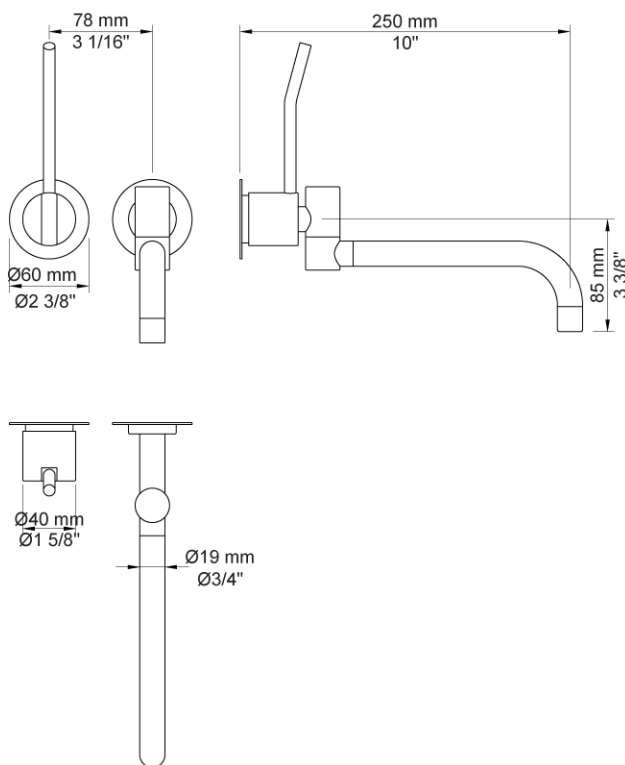
**131L**

One-handle build-in mixer with ceramic disc technology. 131LUP = Mixer 100. 131LAP = Handle NR28L, 250 mm double swivel spout 030, 60 mm circular flanges 001, 3001.

Ada approved.

Flow

	Bar:	1.0	2.0	3.0	4.0	5.0
131L	(l/min)	4.8	6.8	8.3	8.3	8.3

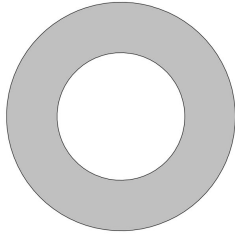
**Available in colors**

Color 02, Grey
 Color 04, Light blue
 Color 05, Orange
 Color 06, Light green
 Color 08, Yellow
 Color 09, Dark grey
 Color 12, Mocca
 Color 14, Bright red
 Color 15, Dark blue
 Color 16, Polished chrome
 Color 17, Gloss black
 Color 18, White
 Color 19, Natural brass
 Color 20, Brushed chrome
 Color 21, Carmine red
 Color 25, Pink
 Color 27, Matt black
 Color 40, Brushed stainless steel

Date:

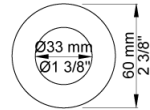
Client:

Project:



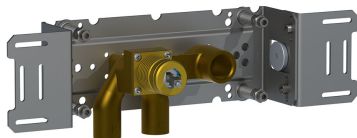
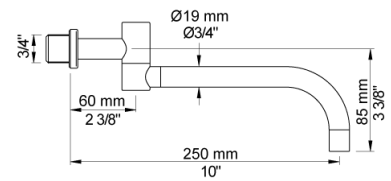
001

60 mm circular flange. Hole Ø33 mm.



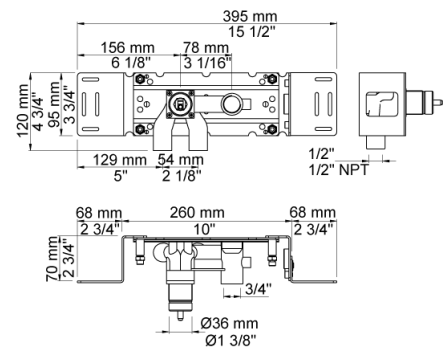
030

250 mm double swivel spout with water saving aerator.



100

One-handle build-in mixer with fixed outlet socket. ½" connection to copper, steel, iron or pex pipe work.



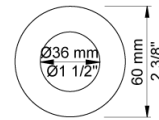
Date:

Client:

Project:



3001
60 mm circular flange. Hole Ø36 mm.



NR28L
Operating handle for 100, 200, 300, 400 incl. variants. Ø40 mm. Long lever.

