

**AXOR ShowerSolutions**  
**Overhead shower 300 1jet with ceiling connection**  
 Surfaces: **Chrome**    Article Number: **35301000**

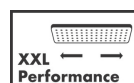


## Description

### product features

- shower head size: 300 mm
- spray type: PowderRain
- flow rate PowderRain (at 3 bar): 19 l/min
- dynamic spray nozzles move out while using
- fully chrome-plated spray disc
- material spray disc: metal
- overhead shower for cleaning removable
- ServiceCard with sieve and flow restrictor can be removed without tools for cleaning purpose
- brass ceiling connector
- ceiling connection length: 100 mm
- installation: ceiling
- connection dimension: DN15

## Technology



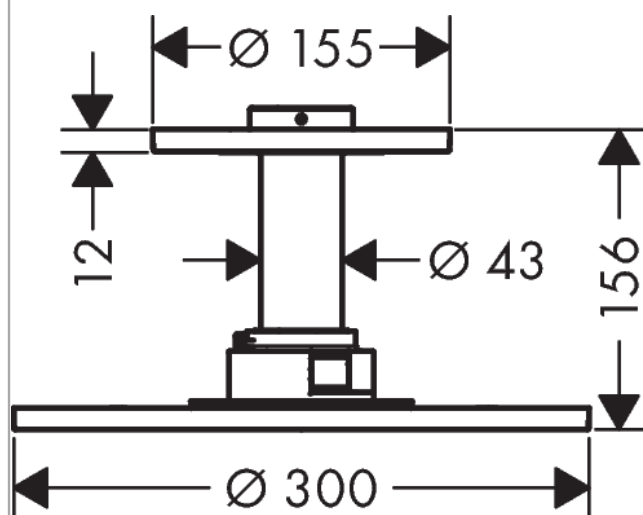
## Design awards



## Product image



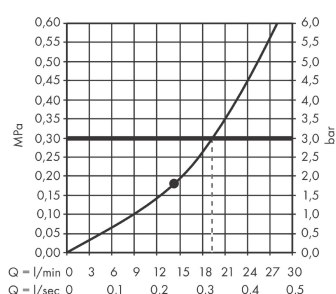
## Scale drawing



**AXOR ShowerSolutions**  
**Overhead shower 300 1jet with ceiling connection**  
 Surfaces: **Chrome**    Article Number: **35301000**



## Flowchart



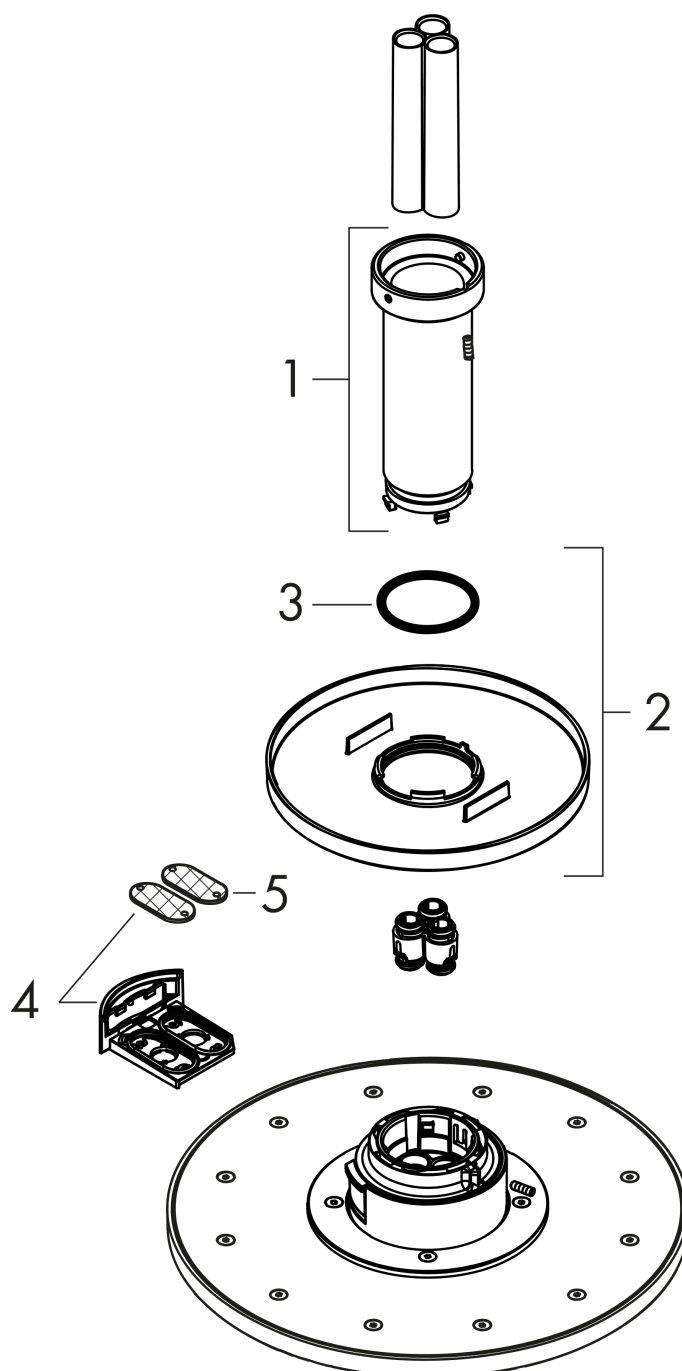
The consumption was measured in combination with the appropriate fittings (thermostat/mixer/in-wall valve) to reflect actual application in practice.

**AXOR ShowerSolutions**  
**Overhead shower 300 1jet with ceiling connection**  
 Surfaces: **Chrome**    Article Number: **35301000**



## Exploded Drawing

Year of production: >01/19



**AXOR ShowerSolutions**  
**Overhead shower 300 1jet with ceiling connection**  
 Surfaces: **Chrome**    Article Number: **35301000**



## Spare part list

Year of production: >01/19

Pos.	Description	Article Number	PC	PU
1	sleeve	92709000	0	1
2	escutcheon	93420000	0	1
3	O-ring 42x3,5	92708000	0	1
4	service unit	93423000	0	1
5	filter	93402000	0	1