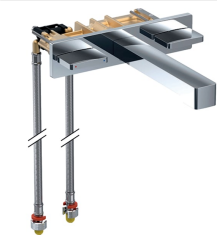
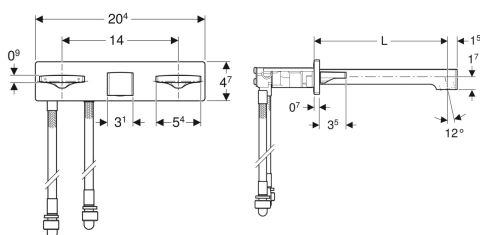


**washbasin tap square design, wall-mounted, two-handle mixer, for Geberit ONE frame**



Example image



**Application purposes**

- For extracting tap water
- For installation in Geberit frames for Geberit ONE washbasin and Geberit ONE wall-mounted tap
- For connecting cold and hot water
- For panelling thickness 10–60 mm

**Characteristics**

- Two-handle mixer
- Left turn handle for temperature setting, right turn handle for volumetric flow rate regulation
- Volume flow control via tap aerator
- With integrated check valve
- With connection hoses, length 57 / 54 cm

**Technical data**

Operating pressure	0.5-10 bar
Differentiated pressure CW/WW	≤ 1.5 bar
Maximum test pressure, water	16 bar
Maximum test pressure, air / inert gas	3 bar
Ambient temperature	1-40 °C
Storage temperature	-20 - +70 °C
Maximum operating temperature, water	60 °C
Maximum operating temperature, water, short-term	90 °C
Flow rate at 3 bar	5 l/min
Calculated flow rate	0.07 l/s
Minimum flow pressure for calculated flow rate	0.5 bar
Product material	Brass / brass chrome-plated

**Scope of delivery**

- Washbasin tap
- Valve block with connection hoses

- Fastening material

**To order additionally**

- Geberit element for Geberit ONE washbasin, for Geberit ONE wall-mounted tap

Art. no.	Colour / surface	L
116.461.21.1	gloss chrome-plated	18 cm